

Marchio / Brand ZUCCHETTI

Classe / Class INOX

## HELM

ZHL659.X

Termostatico incasso doccia con un rubinetto d'arresto. / Built-in thermostatic shower mixer with stop valve.



Termostatico incasso doccia da 1/2", in acciaio inox AISI 316L, con un rubinetto d'arresto.

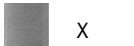
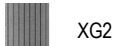













1/2" built-in thermostatic shower mixer in AISI 316L stainless steel, with stop valve.

R97820

Parte incasso. / Built-in part.



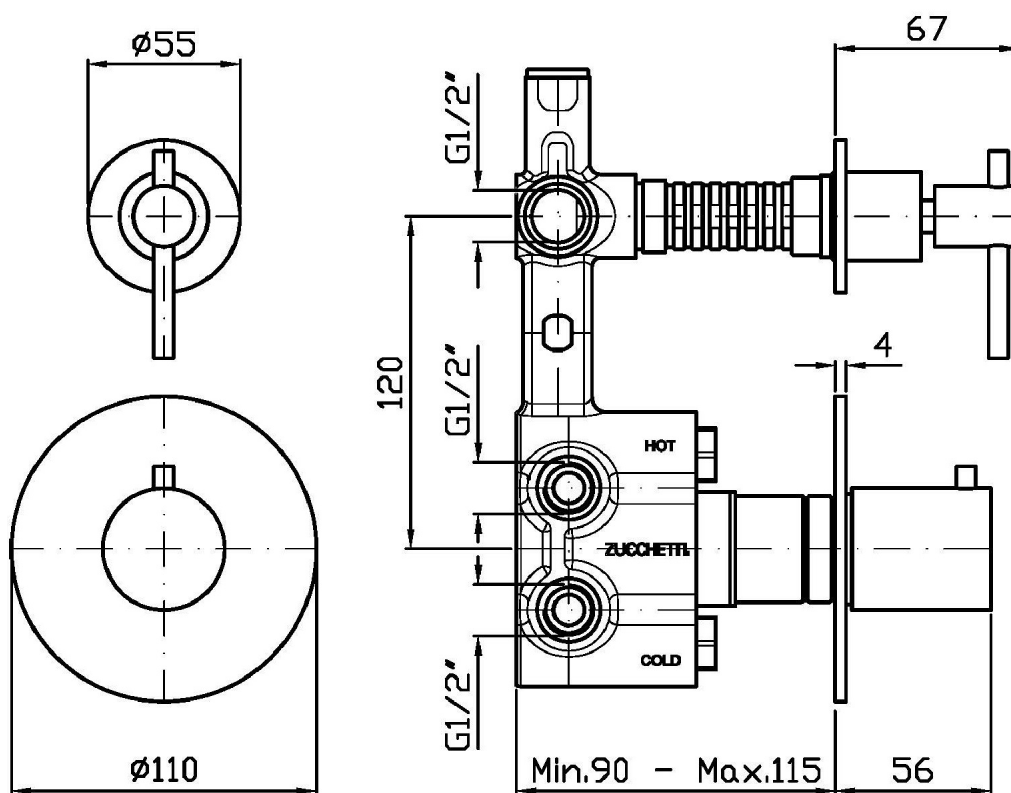
## Finiture / Finishes

|   |  |  |   |   |  |   |   |
|---|--|--|---|---|--|---|---|
|  X<br>Acciaio inox spazzolato /<br>Brushed stainless steel                  |  XG2<br>Acciaio inox spazz.-godr.<br>verticale / Br. stainless steel -<br>Vertical knurling |  XG3<br>Acciaio inox spazz.-godronatura<br>diagonale / Br. stainless<br>steel-diagonal knurling |  XP31<br>Brushed PVD British gold / -  |  XP31G2<br>Br. PVD British gold-godr.<br>diagonale / Br. PVD British<br>gold-vertical knurling |  XP31G3<br>Br. PVD British gold-godr.<br>diagonale / Br. PVD British<br>gold-diagonal knurling |  XP41<br>Brushed PVD gold / Brushed PVD<br>gold                                    |  XP41G2<br>Br. PVD gold-godronatura<br>verticale / Brushed PVD<br>gold-vertical knurling |
|  XP41G3<br>Br. PVD gold-godr. diagonale /<br>Br. PVD gold-diagonal knurling |  XP81<br>PVD Brushed Total Black / PVD<br>Brushed Total Black                               |  XP81G2<br>Br. PVD Total Black-godr.<br>verticale / Br. PVD Total<br>Black-vertical knurling    |  XP81G3<br>Br. PVD Total Black-godr.<br>diagonale / Br. PVD Total<br>Black-diagonal knurling |  XP91<br>Brushed PVD copper / Brushed<br>PVD copper  |  XP91G2<br>Br. PVD copper-godr. verticale /<br>Br. PVD copper-vertical knurling                |  XP91G3<br>Br. PVD copper-godr. diagonale<br>/ Br. PVD copper-diagonal<br>knurling |   |

## HELM

ZHL659.X

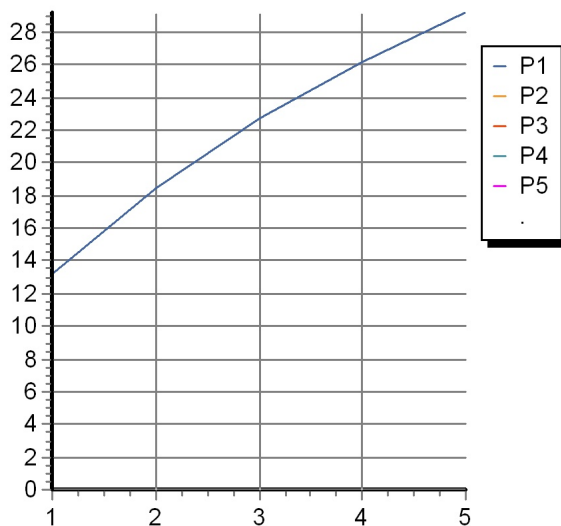
Disegno Complessivo / Overall Drawing



## HELM

### ZHL659.X Portate / Flowrates (lt/min)

| PRESSIONE<br>PRESSURE           | 1 BAR | 2 BAR | 3 BAR | 4 BAR | 5 BAR |
|---------------------------------|-------|-------|-------|-------|-------|
| 1 RUBINETTO APERTO<br><i>P1</i> | 13,2  | 18,4  | 22,7  | 26,2  | 29,2  |
| <i>P2</i>                       |       |       |       |       |       |
| <i>P3</i>                       |       |       |       |       |       |
| <i>P4</i>                       |       |       |       |       |       |
| <i>P5</i>                       |       |       |       |       |       |



## HELM

### ZHL659.X Pesì e Misure / Weights and Sizes

|                               |               |                |
|-------------------------------|---------------|----------------|
| Peso ( Kg ) Weight ( lb )     | 1,70 ( Kg )   | 3,75 ( lb )    |
| Volume test ( dc3 ) - ( in3 ) | 11,01 ( dc3 ) | 671,87 ( in3 ) |
| h ( mm ) - ( in )             | 90,00 ( mm )  | 3,54 ( in )    |
| L1 ( mm ) - ( in )            | 335,00 ( mm ) | 13,19 ( in )   |
| L2 ( mm ) - ( in )            | 365,00 ( mm ) | 14,37 ( in )   |

